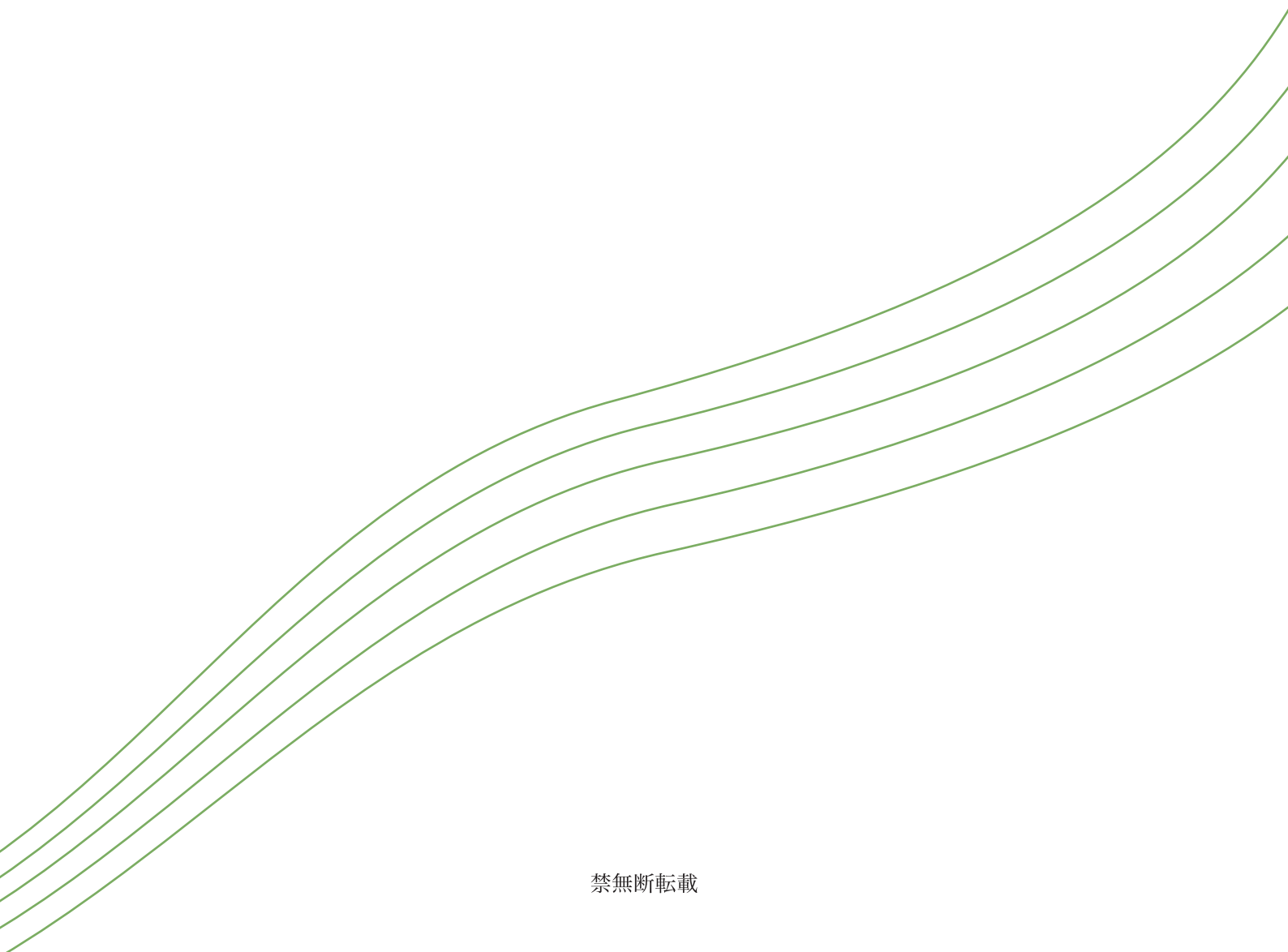


Scale Exercise for Bass Clef

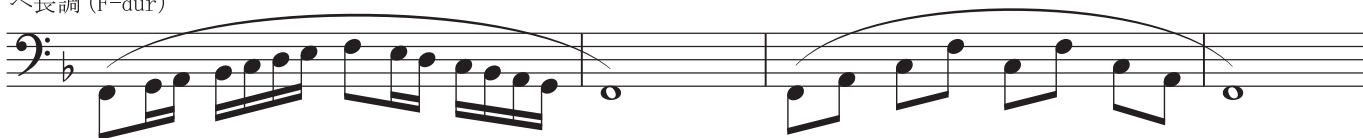


長調

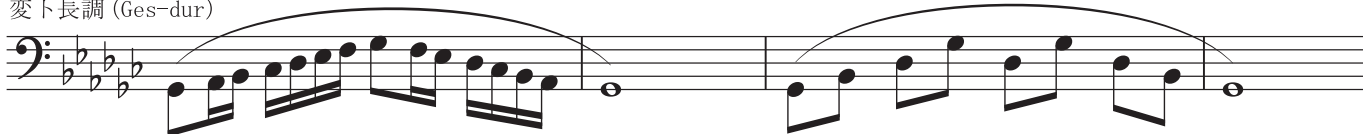


LOVE THE ORIGINAL
楽譜のフビーはやめまじよ

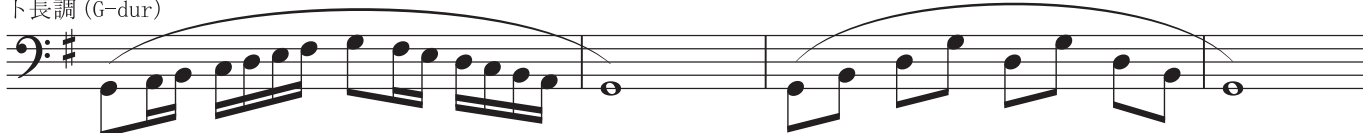
へ長調 (F-dur)



変ト長調 (Ges-dur)



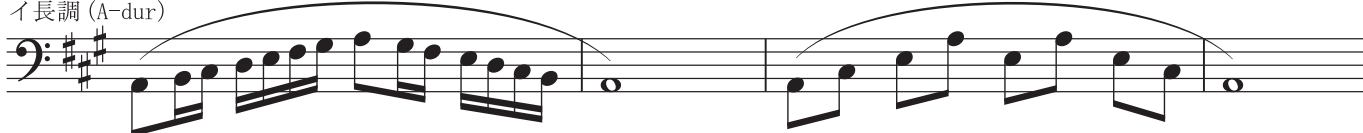
ト長調 (G-dur)



変イ長調 (As-dur)



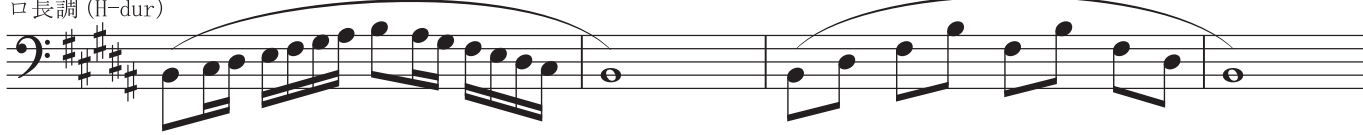
イ長調 (A-dur)



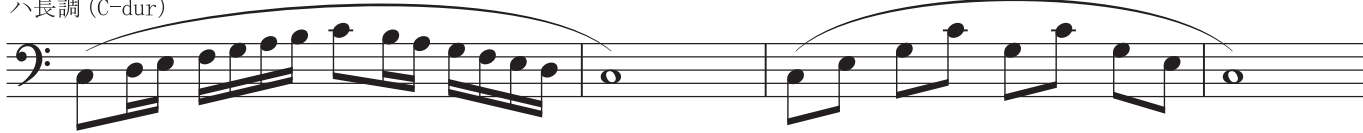
変ロ長調 (B-dur)



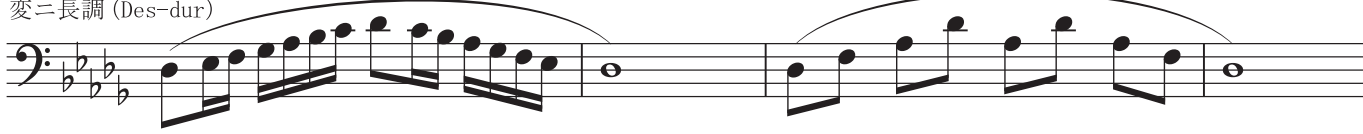
ロ長調 (H-dur)



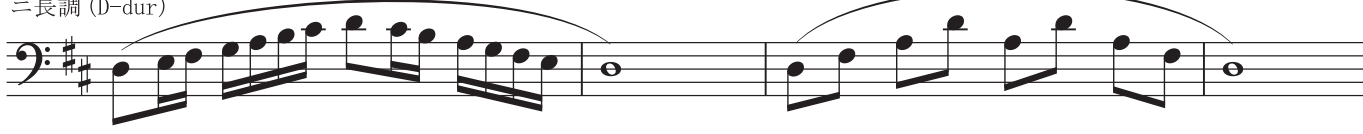
ハ長調 (C-dur)



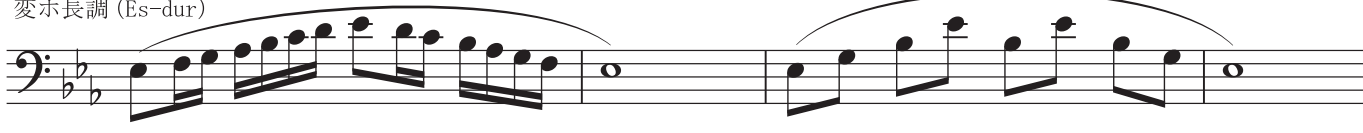
変ニ長調 (Des-dur)



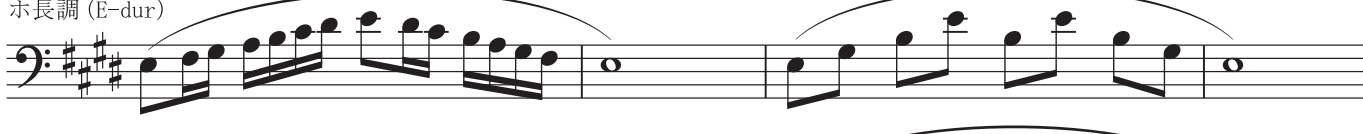
ニ長調 (D-dur)



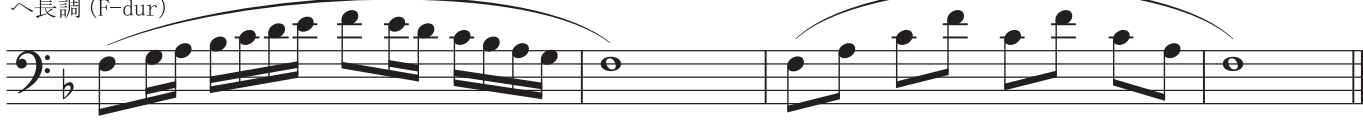
変ホ長調 (Es-dur)



ホ長調 (E-dur)



へ長調 (F-dur)



短調



LOVE THE ORIGINAL
楽譜のこびりはやめまじろ

へ短調 (f-moll)



嬰へ短調 (fis-moll)



ト短調 (g-moll)



嬰ト短調 (gis-moll)



イ短調 (a-moll)



変ロ短調 (b-moll)



ロ短調 (h-moll)



ハ短調 (c-moll)



嬰ハ短調 (cis-moll)



ニ短調 (d-moll)



変ホ短調 (es-moll)



ホ短調 (e-moll)



へ短調 (f-moll)

